

A072A

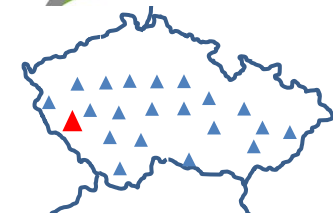
Chudenice

INSTALLATION

Start : 27.8.2015
 Lat : 49.4683
 Lon : 13.1735
 Alt : 495 m

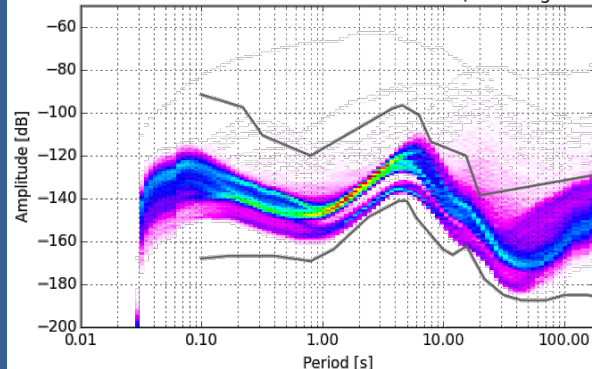
EQUIPMENT

Sensor : STS 2 120 s
 Depth : 3 m
 Recorder : Gaia 1
 Power : electricity grid



The station is located in the cellar of courtyard in chateau Chudenice. Seismometer is built in a wall niche. The GPS antenna is brought out over the front door, length - 10 m, direction - E, the view partially obscured. Geomorphology: Švihov Highlands. Subsoil: sandy loam sediment.

Z3.A072A.HHZ 2015-08-27 -- 2015-11-16 (7237 segments)



Aug 30 2015 Sep 13 2015 Sep 27 2015 Oct 11 2015 Oct 25 2015 Nov 08 2015

